

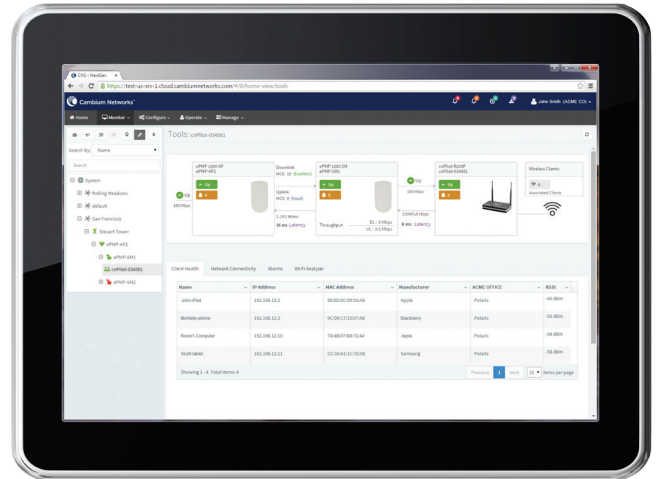
# cnPilot™ Home & Business R200 and R201

## SIMPLYING THE NETWORK.

Extending the service provider's indoor reach and streamlining components for a simplified indoor network. Versatile multi-function WLAN access points, offering remote visibility and end-to-end troubleshooting, extend the service provider's indoor reach.

**Cloud Management:** backed by Cambium's *cnMaestro*™ cloud manager offering end-to-end visibility of the network and customer devices.

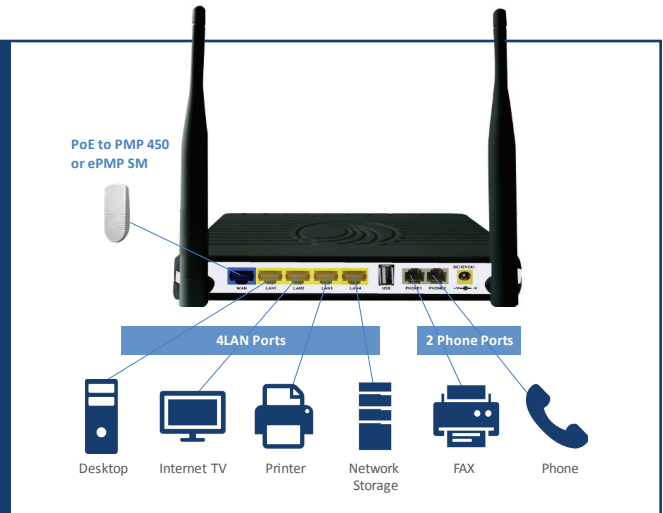
- Out-of-the box zero touch onboarding
- Stateful alarms and dashboard views
- Multiple management options available including cloud-based, TR-069, SNMP and an enriched set of RESTful interfaces



**Highly Integrated:** the WLAN routers simplify the indoor home network-combing in one box commonly needed functions often put together from different manufacturers.

Connect up to

- 4 LAN Ports
- 2 Phone Ports
- 64 Wireless Devices



**End-to-End Troubleshooting:** Single dashboard view and rich statistics ensure rapid root cause detection and issue resolution

- One-click functionality reveals the health of all network nodes related to the problem area
- Troubleshoot end user client connectivity on any WLAN from a single console
- No truck roll required to debug wired or wireless connectivity configurations

**Multiple SSIDs and Service Provider (community) SSID's:** Enables service providers to offer SSIDs across their network as users travel from home, to outdoor public hotspot and to local business / small enterprise or campus. This allows network operators to promote their brand throughout their customers' daily journeys.



R200



R201

## WLAN ROUTERS TO SUIT FUNCTIONS AND BUDGETS

	R200	R200P	R201	R201P	R201W
WLAN Routers	802.11n Single band 2.4 GHz	802.11n Single band 2.4 GHz	802.11ac Dual band 2.4 and 5 GHz	802.11ac Dual band 2.4 and 5 GHz	802.11ac Dual band 2.4 and 5 GHz
ATA - for Voice	✓	✓	✓	✓	
Cambium PoE out		✓		✓	✓

## Specifications

FEATURES	R200	R200P	R201	R201P	R201W
<b>KEY INTERFACES</b>					
TELEPHONE INTERFACES 2 FXS ports, RJ11	✓	✓	✓	✓	
WAN	1 x 10/100 RJ45		1 x GigE, RJ45		
LAN	4 x 10/100BaseT, RJ45		4 x GigE, RJ45		
USB	1 USB 2.0 Host Port for shared printer or storage		1 USB 2.0 Host Port for shared printer or storage		
WiFi	2x2 Single band 11n 2.4 GHz		2x2 Dual band 11ac 2.4 (11n) and 5 GHz (11ac)		
SSIDs 4 Per Radio	4		8		
PoE OUTPUT Powering Cambium's PM 450 and ePMP Subscriber Module		✓		✓	✓
RESET BUTTON Factory reset button	✓	✓	✓	✓	✓
LED INDICATORS: Power	✓	✓	✓	✓	✓
WLAN	✓	✓	✓	✓	✓
LAN 1-4	✓	✓	✓	✓	✓
Phone 1-2	✓	✓	✓	✓	n/a

# Specifications

FEATURES	R200	R200P	R201	R201P	R201W
<b>Network</b>					
PROTOCOL <i>DHCP/ PPPoE/ Static IP</i>	✓	✓	✓	✓	✓
<i>PPTP/L2TP VPN</i>	✓	✓	✓	✓	✓
<i>Dynamic DNS/DNS SRV (RFC 1706 and RFC 2782)</i>	✓	✓	✓	✓	✓
<i>DMZ</i>	✓	✓	✓	✓	✓
<i>NAT Traversal (Static NAT Route or by STUN)</i>	✓	✓	✓	✓	✓
<i>DHCP Client and DHCP server</i>	✓	✓	✓	✓	✓
<i>MAC address Clone</i>	✓	✓	✓	✓	✓
<i>IP Conflict Detection</i>	✓	✓	✓	✓	✓
ROUTE MODE <i>Route/Bridge, customer configurable</i>					
<i>Support IEEE 802.1Q VLAN/802.1p</i>	✓	✓	✓	✓	✓
<i>Layer 3 (DSCP) settings for SIP, RTP and Data</i>					
QUALITY OF SERVICE <i>Support IEEE 802.1Q VLAN/802.1p</i>	✓	✓	✓	✓	✓
<i>Layer 3 (DSCP) settings for SIP, RTP and Data</i>					
<b>Wireless INTERFACES</b>					
PROTOCOL	802.11 b/g/n		802.11 b/g/n/ac		
SECURITY <i>WEP, WPA-PSK (TKIP), WPA-PSK (AES), WPA2-PSK (TKIP), WPA2-PSK (AES), Mixed mode</i>	✓	✓	✓	✓	✓
OTHERS <i>AP isolation, MBSSID AP isolation, WMM, MAC Filter, WDS, WPS</i>	✓	✓	✓	✓	✓

# Specifications

FEATURES	R200	R200P	R201	R201P	R201W
<b>Call Features</b>					
IP SIGNALING <i>SIP V2 (RFC3261/3262/ 3263/3264)</i>	✓	✓	✓	✓	
VOICE CODEC <i>G.711 (A-law, <math>\mu</math>-law), G.722, G.723, G.729</i>	✓	✓	✓	✓	
FAX OVER IP <i>Real Time FAX over IP via T.38</i>	✓	✓	✓	✓	
<i>T.30 Fax with G.711</i>	✓	✓	✓	✓	
VOICE FEATURES <i>Adaptive jitter buffer management</i>	✓	✓	✓	✓	
<i>Voice Activity Detection</i>	✓	✓	✓	✓	
<i>Comfort Noise Generation</i>	✓	✓	✓	✓	
<i>Echo Cancellation</i>	✓	✓	✓	✓	
CALL FEATURES <i>3-way Conference</i>	✓	✓	✓	✓	
<i>Call hold, Call forwarding, Call transfer, Call waiting,</i>	✓	✓	✓	✓	
<i>Speed dial, Hotline, Dial plan</i>	✓	✓	✓	✓	
<i>Caller ID, Black list, Call log</i>	✓	✓	✓	✓	
<b>NETWORK MANAGEMENT</b>					
Integrated Management <i>cnMaestro Cloud Based Management for Configuration, Provisioning and daily Monitoring</i>	✓	✓	✓	✓	✓
CONFIGURATION <i>Web GUI interface</i>	✓	✓	✓	✓	✓
<i>Interactive Voice Response (IVR)</i>	✓	✓	✓	✓	✓
AUTO PROVISIONING <i>TFTP, HTTP</i>	✓	✓	✓	✓	✓
SNMP <i>SNMP v2</i>	✓	✓	✓	✓	✓
TIME <i>SNTP</i>	✓	✓	✓	✓	✓
ADMIN <i>Administrator and User</i>	✓	✓	✓	✓	✓

# Specifications

FEATURES	R200	R200P	R201	R201P	R201W
NETWORK MANAGEMENT <i>(continued)</i>					
ALT MGMT <i>TR069</i>	✓	✓	✓	✓	✓
SYSLOG <i>Local, Remote</i>	✓	✓	✓	✓	✓
POWER SUPPLY					
AC/DC ADPATOR	AC INPUT: 100 -240V, 50-60 Hz DC OUTPUT: 12V, 2A		AC INPUT: 100 -240V, 50-60 Hz DC OUTPUT: 12V, 2A		AC INPUT: 100 -240V, 50-60 Hz DC OUTPUT: 12V, 3A
ENVIRONMENTAL					
OPERATION TEMP <i>+5°C to +45°C 5°C to +45°C</i>	✓	✓	✓	✓	✓
STORAGE TEMP <i>-25°C to +85°C</i>	✓	✓	✓	✓	✓
RELATIVE HUMIDITY <i>10%-90% No Condensing</i>	✓	✓	✓	✓	✓
Weight	0.75 kg		0.8 kg		
DIMENSION (H x W x D)	180 mm x 110 mm x 30 mm		175 mm x 155 mm x 35 mm		
REGULATORY					
EMC <i>FCC part 15B Class B, ETSI EN 301 489-1, ETSI EN 301 489-17, EN61000-6-1, EN61000-6-3, CE, RoHS</i>	✓	✓	✓	✓	✓
SAFETY <i>IEC 60950-1, UL 60950-1, EN 60950-1,</i>	✓	✓	✓	✓	✓