

## ABOUT CAMBIUM NETWORKS

Cambium Networks is a leading global provider of wireless broadband solutions that connect the unconnected. Through its extensive portfolio of reliable, scalable and secure WiFi and wireless broadband point-to-point (PTP) and point-to-multipoint (PMP) platforms managed by cloud-based software, Cambium Networks makes it possible for all service providers; enterprises; governmental and military agencies; oil, gas, and utility companies; internet service providers; and public safety networks to build powerful communications networks, reach users from 250 kilometers across mountain tops down to the last meter to their devices, and intelligently manage their infrastructure through end-to-end network visibility and actionable analytics. Headquartered outside Chicago and with R&D centers in the U.S., Ashburton, U.K., and Bangalore, India, Cambium Networks sells through a range of trusted global distributors.

For more information, visit:

[www.cambiumnetworks.com](http://www.cambiumnetworks.com) and  
[www.connectingtheunconnected.org](http://www.connectingtheunconnected.org).

### *US Office*

3800 Golf Road, Suite 360,  
Rolling Meadows, IL 60008 USA  
+1 888 863 5250

### *UK Office*

Unit B2, Linhay Business Park,  
Eastern Road Ashburton, United Kingdom, TQ13 7UP  
+44 1364 655500

Copyright © 2017 Cambium Networks, Ltd.



Point-to-Multipoint  
Wireless Broadband Solutions  
CONNECT YOUR WORLD.



Whatever your world looks like, you need high-speed voice, data, and video communications serving multiple people in multiple locations. Cambium Networks wireless broadband point-to-multipoint network solutions deliver anywhere, anytime access.



## DATA, VOICE, AND VIDEO—WHERE YOU NEED IT

**Rural Connectivity** – Wireless networks make broadband access to multiple locations extremely cost-effective. There are no major equipment or software investments needed to deliver scalable, interference-resistant, high-speed connectivity to multiple locations.

**Video Surveillance** – Wireless infrastructure enables rapid deployment of video security cameras to the exact location where they are needed. Low latency means that the images will be consistently sharp.

**Business Connectivity** – Reach remote locations or connect a business or educational campus for high-speed information sharing of data, voice, and video services.

## The Cambium Difference

- **Operate with Confidence** – With industry-leading interference tolerance, you can be confident your network will keep operating when others fail. By protecting against external and self-interference, Cambium solutions are built for consistently satisfying performance.
- **Top Wireless Performance** – The highest spectral efficiency in the industry, coupled with optimized handling of near- or non-line-of-sight conditions means that with Cambium, your network can reach further and push more data – no matter the conditions.
- **Licensed and Unlicensed Spectrum** – Leverage your investment in licensed spectrum where needed in populated areas while gaining the best use of the unlicensed spectrum in rural and remote locations to minimize total spectrum cost.
- **Security** – Protecting your network is protecting your business. Cambium solutions are designed from the ground up for secure connectivity, from wireless link encryption to in-depth management security of each unit, helping you stay secure.
- **Scalability** – More customers mean more revenue for the network operator. Designed with scalability in mind, Cambium solutions allow reuse of frequencies via GPS Synchronization and optimized MAC protocols to maximize the use of available spectrum, ensuring connection of as many subscribers as possible.
- **Reliability** – Deploy quality wireless broadband products that will work well out of the box and continue to work well over the long haul. More reliable means less expensive.
- **Total Cost of Ownership** – Run your network for less with an IP-based wireless network that comprises licensed and unlicensed backhaul and access components, rapidly deployed and reliable, with minimal maintenance cost.
- **Sustainability** – Trust solutions designed to operate for years from a supplier with a proven track record of stability and sustainable product evolution.

## An Attractive Business Case

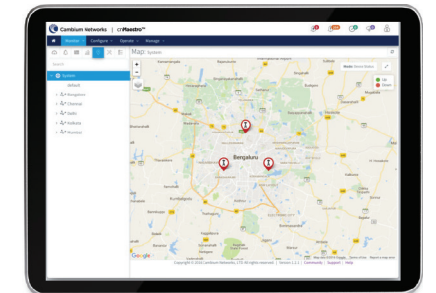
Our wireless access solutions enable your organization to deploy and extend high-speed communications more quickly and much more cost-effectively than fiber or wired solutions. Cambium technology significantly reduces the cost of deployment and speeds the time to market, allowing for installation in a matter of days or weeks, versus months or years. The platform's exceptionally low acquisition, installation, operation, and maintenance costs result in substantially lower total cost of ownership, as well as delivery of ROI in months.



(L to R) ePMP 2000 AP, Smart and sector antenna, Force 180, Force 200



(L to R) PMP 450m, PMP 450i, PMP 450i SM, PMP 450 900 MHz SM



## ePMP™ 2000

**So long, interference.** With industry-leading interference tolerance powered by Hypure™ technology, ePMP 2000 uses Smart Beamforming and Intelligent Filtering to keep the network performing in challenging real-world conditions.

- Smart Beamforming and Intelligent Filtering to handle real-world interference
- Frequency reuse with GPS Synchronization
- Scalable up to 120 subscribers per sector
- 128-bit AES encryption, L3 firewall, HTTPS/SSH security

## PMP 450

**Go Massive.** cnMedusa™ Massive MU-MIMO technology delivers ground-breaking spectral efficiency in a single box.

- More than 400 Mbps actual throughput possible per sector
- Simultaneous communication to up to 7 Subscriber Modules
- Industry-leading spectral efficiency in a 20 MHz channel
- Investment protection through operability with existing PMP 450 or 450i Subscriber Modules
- Scalable to 238 subscribers per sector

## cnMaestro™ Management

**Secure end-to-end network management from a single pane of glass.** The system is either a cloud-based or an on-premises platform and provides:

- Inventory management
- Device onboarding
- Alarm and event monitoring
- Network maintenance